



MONTHLY MEMBERSHIP PROGRESS REPORT

District 3234D2

Results as of: 01/31/2018

GMT: JAYESH THAKKAR

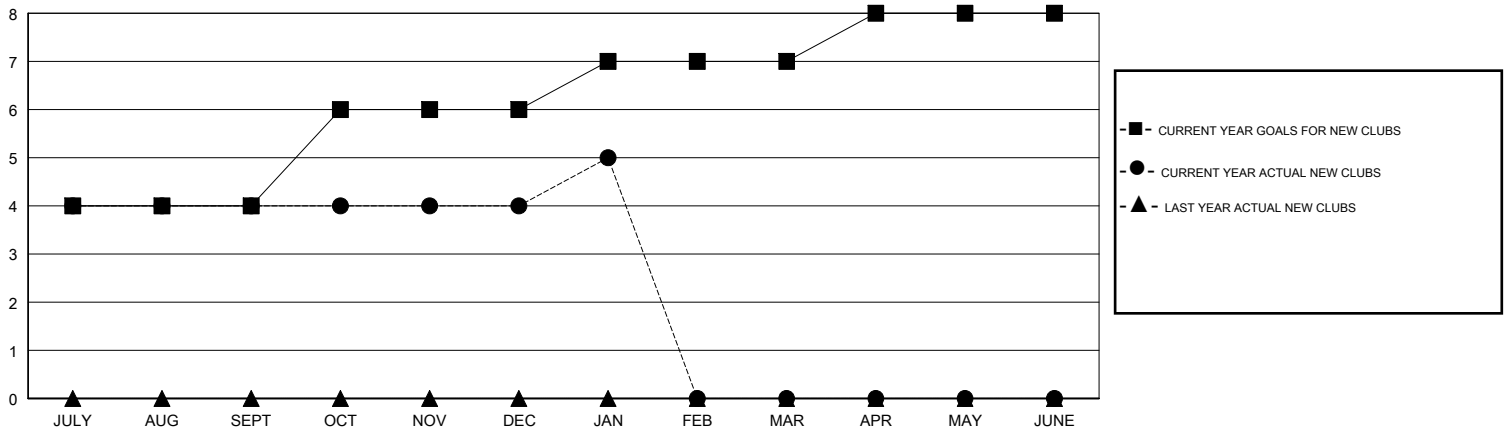
LOCATION INDIA

GMT CA

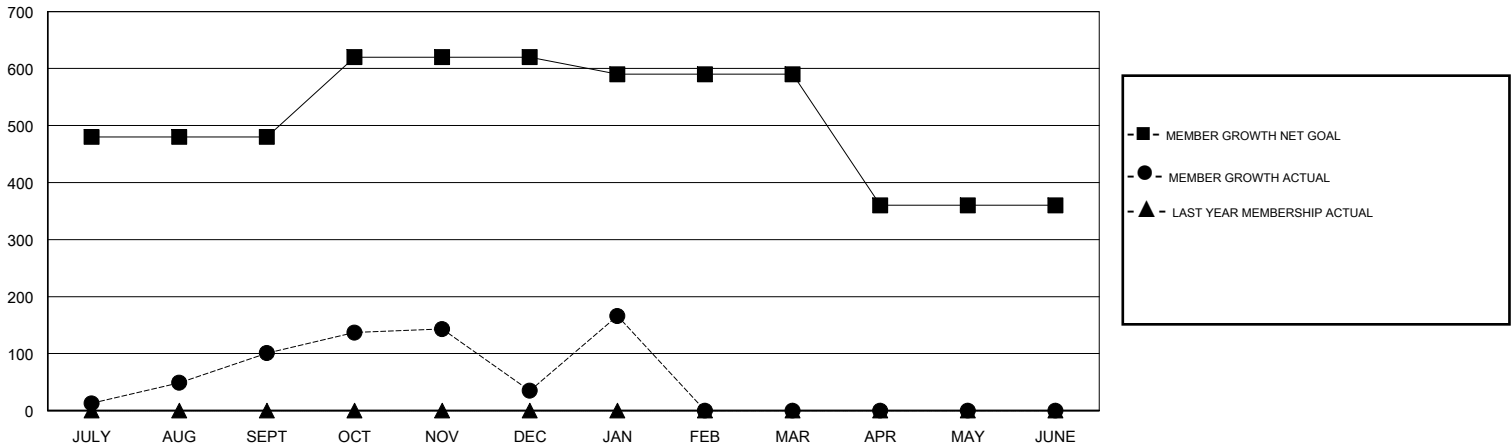
Clubs			
RESULTS FOR 2017-2018			
QUARTER	NEW CLUB GOAL	NEW CLUBS	DROPPED CLUBS
JULY/AUG/SEPT	4	4	1
OCT/NOV/DEC	2	0	6
JAN/FEB/MAR	1	1	0
APR/MAY/JUNE	1	0	0

Members			
RESULTS FOR 2017-2018			
QUARTER	MEMBER GROWTH NET GOAL	MEMBER GROWTH ACTUAL	DROPPED MEMBERS ACTUAL (including transfers)
JULY/AUG/SEPT	480	331	207
OCT/NOV/DEC	140	181	243
JAN/FEB/MAR	-30	176	39
APR/MAY/JUNE	-230	0	0

GOALS AND ACTUAL NEW CLUBS CUMULATIVE



GOALS AND ACTUAL MEMBERS CUMULATIVE



DROPPED CLUBS: 7	64 CLUBS OF 136 ADDED 1 OR MORE NEW MEMBERS	<u>GENDER DISTRIBUTION</u>	
DROPPED MEMBERS		MALE	3,353 (59.38%)
DECEASED	2	FEMALE	2,294 (40.62%)
CLUB CANCELLED	148	Women Percentage Fiscal Year Goal: 40%	
OTHER	339	TOTAL FAMILY UNIT MEMBERS	3,461
TOTAL	489	FAMILY MEMBERS PAYING HALF DUES	1,807

[CLICK HERE FOR CUMULATIVE MEMBERSHIP DATA](#)